



WINDSEEKER
Foundation

SET COURSE FOR NEW HORIZONS

The Tall Ships Races 2024

RACE 3

MARIEHAMN, ÅLAND ISLANDS (FI) – SZCZECIN (PL)

26/07/2024 – 04/08/2024

If you would like to get help with booking your travel to/from the ports, check out the Travel Counsellors [website](#) or contact Manon Eeken at:

- manon.eeken@travelcounsellors.nl
- +31 023-5762105

HOW TO GET TO MARIEHAMN

To get to Mariehamn, the capital city of the Åland Islands, you have a few options depending on your starting location. The Åland Islands are an autonomous region of Finland, located on the Baltic Sea.

You can check out the Visit Åland website for travel suggestions – [here](#).

By plane

If you're coming from a distant location, you can fly to Mariehamn Airport (Mariehamns flygplats, airport code MHQ). There are flights from several cities in Finland, Sweden, and occasionally other nearby countries.

Check websites in your country that compare different airlines for flying with the best deal, like [Skyscanner](#).

By ferry

Ferries are a common way to reach the Åland Islands, especially if you're traveling from Sweden or Finland. Several ferry operators provide regular services to and from the islands. Here's how to do it:

From Sweden:

- Stockholm to Mariehamn: There are ferries operating between Stockholm (Sweden) and Mariehamn. These ferries are operated by companies like [Viking Line](#), [Tallink Silja Line](#), and [Eckerö Line](#).

From Finland:

- Turku to Mariehamn: Ferries run between Turku (Finland) and Mariehamn, operated by companies like [Viking Line](#) and [Tallink Silja Line](#),
- Helsinki to Mariehamn: You can also take a ferry from Helsinki (Finland) to Mariehamn, provided by companies like [Viking Line](#) and [Tallink Silja Line](#),

Ferry schedules can vary depending on the season and the operator, so it's recommended to check their websites for up-to-date information on schedules and ticket prices.

Getting to the harbour

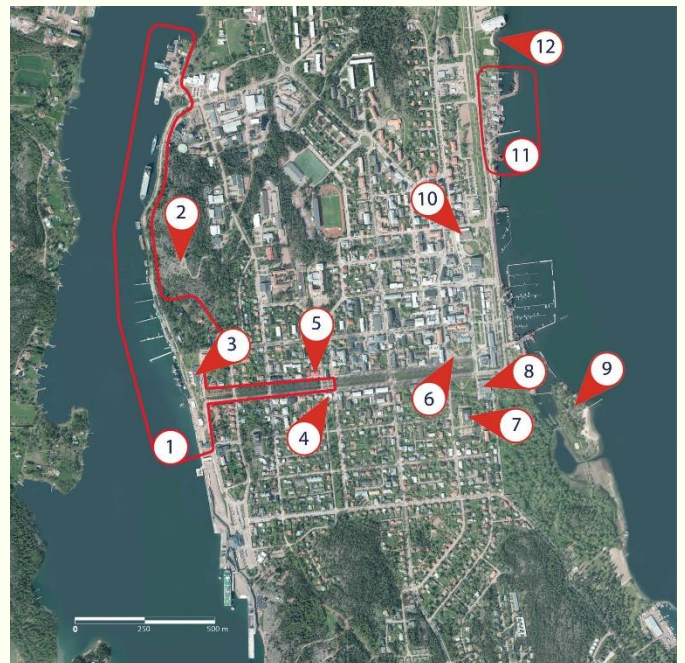
If you arrive to:

- the Western harbour, the Ships are only 300 meters to walk;
- another of Ålands ports, there are buses to Mariehamn.

You can use the local bus service to reach Mariehamn port. Buses in Mariehamn are operated by the company [Ålands lokaltrafik](#), and you can check their website or the information desk at the airport for the most up-to-date bus schedules and routes. The distance between Mariehamn Airport and the port is relatively short, so your journey should be quick and straightforward.

The event area in Mariehamn

1. Main Event Area = The western harbour, where the Ships are moored.
2. Badhusberget – Viewing Point
3. Åland Maritime Museum (Auditorium for Captains briefing)
4. Media Centre
5. Crew Centre
6. Town Square (Crew Party)
7. Town Hall (Captains Dinner)
8. Åland Cultural History Museum & Åland Art Museum
9. Lilla Holmen – One of four sand beaches in Mariehamn
10. Public Library
11. Maritime Quarter
12. Mariebad swimming and wellness centre with beach & beach volley (Sports & Beach Party)
13. Korrvik – Parade of sails view point



HOW TO GET BACK FROM SZCZECIN

By plane

The nearest airports to Szczecin are:

- 29 km: Szczecin-Goleniów "Solidarity" Airport (SZZ)
- 137 km: Berlin Brandenburg (BER)

While not directly in Szczecin, the Berlin Airport is relatively close and can be considered as an alternative option, with more international flights. There are direct [FlixBus](#) connections from Berlin Airport to Szczecin, which take around 2-2,5 hours to arrive.

Check websites in your country that compare different airlines for flying with the best deal, like [Skyscanner](#).

By train

Szczecin has good train connections with other major Polish cities, and some international destinations. The main train station in Szczecin is Szczecin Główny.

You can check the schedules and book tickets through the [Polish State Railways \(PKP Intercity\)](#) website or other train booking platforms.

By bus

There are national and international bus services from Szczecin to other cities. You can check bus schedules and book tickets through platforms like [FlixBus](#) or other bus operators.