

The Tall Ships Races 2024

Travel suggestions

If you would like to get help with booking your travel to/from the ports, you can use the service of the Travel Counsellors – you can check out their [website](#), or contact Manon Eeken at:

- manon.eeken@travelcounsellors.nl
- +31 023-5762105

If you prefer to arrange your own travel, you can use our advice below – just click on the Journey you will sail to go to the correct page.

Journeys:

RACE 1: KLAIPEDA (LT) – HELSINKI (FI)	1
CRUISE IN COMPANY 1: HELSINKI (FI) – TALLINN (EE)	4
RACE 2: TALLINN (EE) – TURKU (FI)	6
CRUISE IN COMPANY 2: TURKU (FI) – MARIEHAMN, ALAND ISLANDS (FI)	8
RACE 3: MARIEHAMN, ALAND ISLANDS (FI) – SZCZECIN (PL)	11

RACE 1: KLAIPEDA (LT) – HELSINKI (FI) 29/06/2024 - 06/07/2024

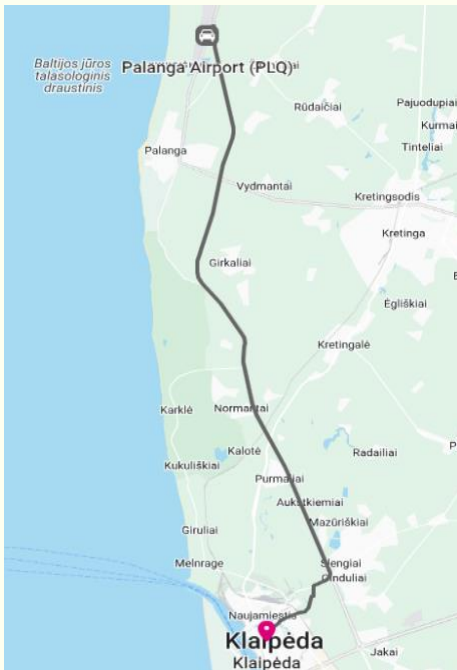
HOW TO GET TO KLAIPEDA

Klaipeda is a major seaport in Lithuania and is located on the Baltic Sea coast.

By plane

The nearest major international airport to Klaipeda is Palanga International Airport (PLQ), which is approximately 30 kilometers away. From the airport, you can reach Klaipeda by taxi, bus, or by renting a car.

Check websites in your country that compare different airlines for flying with the best deal, like [Skyscanner](#).



The best way to get from Palanga Airport (PLQ) to Klaipėda without a car is to take a bus line 31 which takes 38 min and costs 1.80 EUR. For more info about the timetables click [here](#).

This is the most popular choice for international travelers, but you have other options.

Rent a car at the airport

It's possible to rent a car at the airports. Check the following websites:

www.rentalcars.com

www.sixt.nl

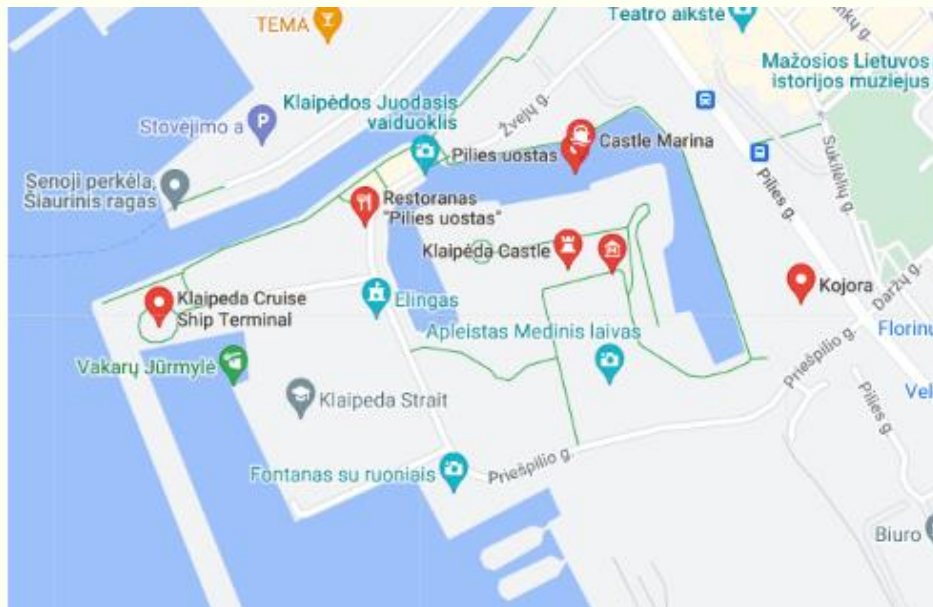
www.hertz.nl

By taxi

At the airports and in front of practically all the train stations cabs are waiting to take you all over the country.

Useful website: [Airport taxi transfers](#)

Getting to the harbour



From the Klaipėda train station you can reach the harbour by public transport, buses 8 and 9 operate frequently and it takes around 20 minutes to reach the harbour. Klaipėda has a well-

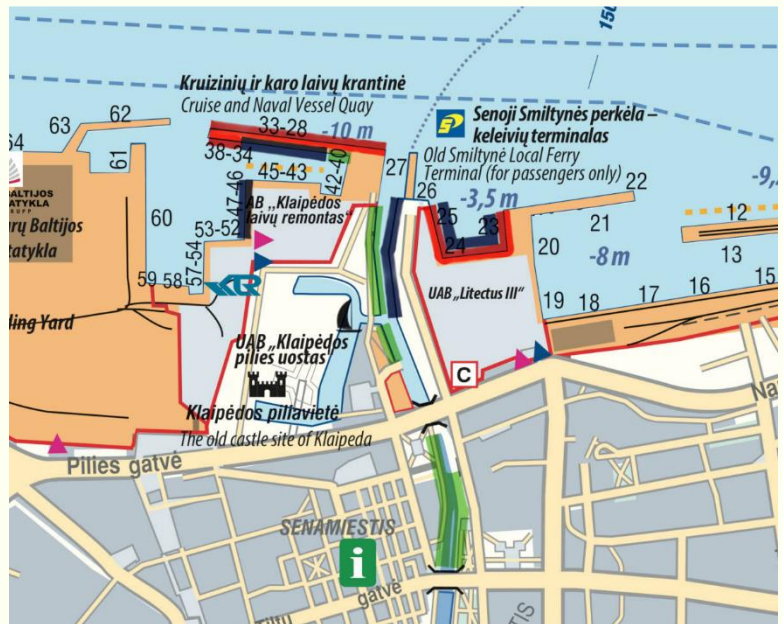
developed bus network. You can check the local bus schedules and routes on the official [website](#) or at the station.

Klaipeda event area

RED: A-class vessels

BLUE: B-class vessels

GREEN: C & D class vessels



HOW TO GET BACK FROM HELSINKI

By train

Helsinki is well-connected by rail to neighboring countries. If you're traveling to nearby cities or countries with good train connections, taking a train can be a convenient and scenic option. The [Helsinki Central Railway Station](#) is the main railway hub.

By plane

Helsinki-Vantaa Airport (HEL) is the main international airport serving the city. You can find flights from major cities around the world to Helsinki.

Check websites in your country that compare different airlines for flying with the best deal, like [Skyscanner](#).

How to get from Helsinki to Helsinki-Vantaa Airport (HEL)

Helsinki-Vantaa Airport (HEL) is located about 18 kilometers from the city center of Helsinki. Getting to the airport from the city center is easy and convenient. Here are the most common ways to do so:

By Train (Local Train - I and P): You can take the local train I or P from [Helsinki Central Railway Station](#) (Helsingin päärautatieasema) to the airport. The train station is integrated into the

airport's Terminal 2. The journey takes approximately 30 minutes. Trains run frequently from early morning to late evening.

By Bus: Several bus lines connect different parts of Helsinki with the airport. The Finnair City Bus (Bus 615) offers a direct link from the city center to the airport. Other bus lines, such as Bus 415, also connect various neighborhoods in Helsinki with the airport.

CRUISE IN COMPANY 1: HELSINKI (FI) – TALLINN (EE) 06/07/2024 – 13/07/2024

HOW TO GET TO HELSINKI

Helsinki is the capital city of Finland. Situated on the shores of the Gulf of Finland in the southern part of the country, Helsinki is characterized by its picturesque coastal landscapes and innovative design culture.

By plane

If you're traveling from another country or a distant city, the most common way to reach Helsinki is by air. [Helsinki-Vantaa Airport](#) (HEL) is the main international airport serving the city. You can find flights from major cities around the world to Helsinki.

Check websites in your country that compare different airlines for flying with the best deal, like [Skyscanner](#).

How to get to Helsinki from Helsinki-Vantaa Airport (HEL)

Helsinki-Vantaa Airport (HEL) is located about 18 kilometers from the city center of Helsinki. Getting from the airport to the city center or other destinations in Helsinki is easy and convenient. Here are the most common ways to do so:

By Train (Local Train - I and P): The train station is integrated into the airport's Terminal 2. You can take the local train I or P from the airport to [Helsinki Central Railway Station](#) (Helsingin päärautatieasema). The journey takes approximately 30 minutes. Trains are frequent and run from early morning to late evening. The station is clearly signposted within the airport.

By Bus: Several bus lines connect the airport with different parts of Helsinki and its suburbs. The Finnair City Bus (Bus 615) offers a direct link from the airport to the city center. Other bus lines, such as Bus 415, connect the airport with various neighborhoods in Helsinki. Buses are a convenient option, especially if your destination is not directly served by the train.

A taxi to the city centre from the airport costs approximately 40-45 euros.

For more info about tickets and timetables click [here](#).

Getting to the harbour

The Tall Ships Races Helsinki 2024 event area and harbour is in the [South Harbour area](#), in the vicinity of the city centre.

The most convenient way to reach the Harbour is to take tram number 2 or 4 from the Central Railway Station. Tram 2 is a popular choice as it takes a scenic route along the waterfront. You can find tram stops near the railway station.

Alternatively, you can walk to the Harbour from the Central Railway Station. It's about a 10-15 minute walk, and you can follow the signs to the South Harbour or simply head towards the water.

HOW TO GET BACK FROM TALLINN

By plane

Tallinn has an international airport called Lennart Meri Tallinn Airport (TLL) with connections to various European cities. You can search for flights from Tallinn to your city using online flight search engines like [Skyscanner](#).

By train

If you're traveling to a nearby European country, you might consider taking a train from Tallinn. However, train connections from Tallinn are limited and might require transfers. Check websites like [Rail Europe](#) or the [Estonian Railways](#) website for information on available routes.

By Ferry

Tallinn is well-connected by ferry services to cities in Finland and Sweden. The most common route is between Tallinn and Helsinki. Ferries are a popular and scenic, especially during the summer months. Operators like [Tallink](#) and [Viking Line](#) offer ferry services.

RACE 2: TALLINN (EE) – TURKU (FI) 13/07/2024 – 20/07/2024

HOW TO REACH TALLINN

Tallinn, the capital city of Estonia, is a captivating blend of medieval charm and modern vibrancy. Nestled along the Baltic Sea, this enchanting city boasts a well-preserved historic center that transports visitors back in time. Tallinn's Old Town is a UNESCO World Heritage site.

By plane

Tallinn has an international airport called Lennart Meri Tallinn Airport (TLL) with connections to various European cities. You can search for flights to Tallinn from your departure city using online flight search engines like [Skyscanner](#) or [Expedia](#)

By ferry

If you're coming from Helsinki, Finland, or other nearby cities, taking a ferry might be a convenient option. Ferries operate regularly between Tallinn and Helsinki, offering both passenger and vehicle transportation. The Tallinn-Helsinki ferry route is one of the most popular in the region. Operators like [Tallink](#) and [Viking Line](#) offer ferry services.

By train

If you're travelling from a nearby European country, you might consider taking a train to Tallinn. However, train connections to Tallinn are limited and might require transfers. Check websites like [Rail Europe](#) or the [Estonian Railways](#) for information on available routes.

HOW TO GET BACK FROM TURKU

Useful websites

Turku destination information: <https://www.turku.fi/en>

Travelling to & around Turku: <https://en.visitturku.fi/travelling-to--around-turku-3938>

By plane

The fastest way to travel from Turku is by flying from Turku Airport (Turun lentoasema). The airport is located about 8 km north of the city center and 12 km from the port.

Airlines operating from Turku are SAS to Stockholm with connections all around Europe and to US, (www.flysas.com), airBaltic to Riga with connections to numerous European destinations (www.airbaltic.com) , Wizz Air to Gdansk and Rome (www.wizzair.com) and Amapola to Åland Islands (www.amapola.nu).

The Helsinki-Vantaa capital area airport is located 170 km or 2 hours away from Turku, offering direct connections all around Europe, Asia and US with Finnair (www.finnair.com) and many other carriers. Finnair also offers a bus transfer between Turku and Helsinki-Vantaa as an additional service for flight bookings.

More information about airports, services and operating airlines via www.finavia.fi/en

Turku airport is accessible by public transport, the local bus number 1 runs between airport, city center, long-distance bus terminal and the ferry terminal frequently. Please note that line 1B runs a similar route, but doesn't go all the way to the airport, instead finishing at the long-distance bus terminal. The timetables and traffic information: www.foli.fi/en.

Check websites in your country that compare different airlines for flying with the best deal, like [Skyscanner](https://www.skyscanner.com).

By train

Turku has three railway stations. Due to track works the trains between Helsinki and Turku operate from Kupittaa station only.

[Track work planned by FTIA - VR](#)

Long distance trains for the period 17.6-28.7.2024 will be open for sale from March 2024.

For this period there will be track work which will affect the route Helsinki-Kupittaa (Turku). At the time of the event, there is expected a full stop in train traffic on this route. The trains will be replaced with buses, which will be available for sale from April 2024.

More information about track works will be updated <https://www.vr.fi/en/on-track/planned-track-work>.

You can find train schedules and book tickets on the Finnish railway company [VR's website](#) or see the journey planner [here](#).

By ferry

If you're traveling to Sweden, you can take a ferry from Turku. [Tallink](#) and [Viking Line](#) operate ferry routes between Stockholm and Turku. The ferries are equipped with various amenities for

passengers. They take between 8 and 11 hours to arrive in Turku (via Åland Islands.) To reach the ferry terminals, go in the direction of Ensimmäinen linja 1.

CRUISE IN COMPANY 2: TURKU (FI) – MARIEHAMN, ÅLAND ISLANDS (FI) 20/07/2024 - 26/07/2024

HOW TO GET TO TURKU

Useful websites

Turku destination information: <https://www.turku.fi/en>

Travelling to & around Turku: <https://en.visitturku.fi/travelling-to--around-turku-3938>

By plane

The fastest way to get to Turku from abroad is by flying into Turku Airport (Turun lentoasema). The airport is located about 8 kilometers north of the city center and 12 km from the port.

Airlines operating from Turku are SAS to Stockholm with connections all around Europe and to US, (www.flysas.com), airBaltic to Riga with connections to numerous European destinations (www.airbaltic.com), Wizz Air to Gdansk and Rome (www.wizzair.com) and Amapola to Åland Islands (www.amapola.nu).

The Helsinki-Vantaa capital area airport is located 170 km or 2 hours away from Turku, offering direct connections all around Europe, Asia and US with Finnair (www.finnair.com) and many other carriers. Finnair also offers a bus transfer between Turku and Helsinki-Vantaa as an additional service for flight bookings.

More information about airports, services and operating airlines via www.finavia.fi/en

Turku airport is accessible by public transport, the local bus number 1 runs between airport, city center and the ferry terminal frequently. The timetables and traffic information www.foli.fi/en.

Check websites in your country that compare different airlines for flying with the best deal, like [Skyscanner](https://www.skyscanner.com).

By train

Turku has three railway stations. Due to track works the trains between Helsinki and Turku operate from Kupittaa station only.

[Track work planned by FTIA - VR](#)

Long distance trains for the period 17.6-28.7.2024 will be open for sale from March 2024.

For this period there will be track work which will affect the route Helsinki-Kupittaa (Turku). At the time of the event, there is expected a full stop in train traffic on this route. The trains will be replaced with buses, which will be available for sale from April 2024.

More information about track works will be updated <https://www.vr.fi/en/on-track/planned-track-work>.

You can find train schedules and book tickets on the Finnish railway company [VR's website](#) or see the journey planner [here](#).

By ferry

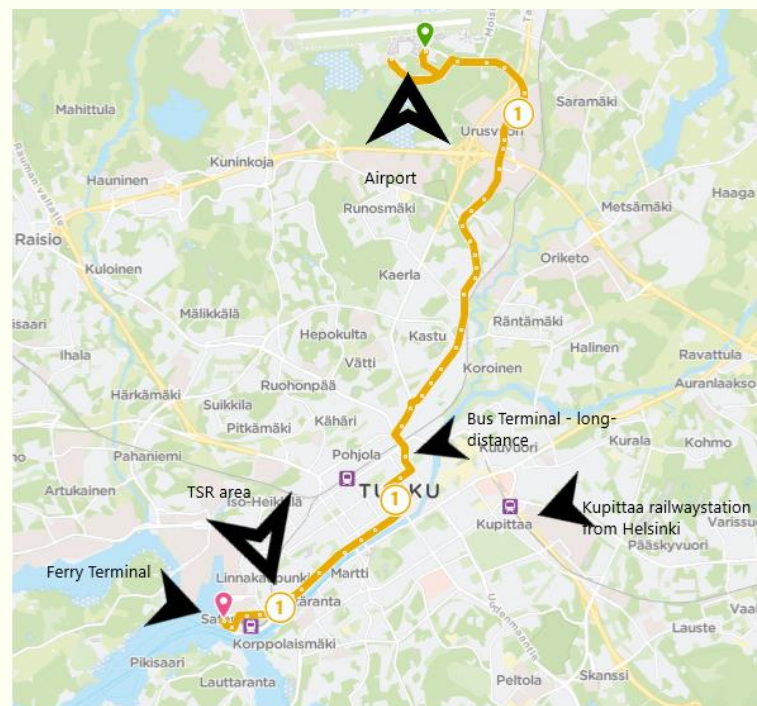
If you're arriving from Sweden, you can take a ferry to Turku. [Tallink](#) and [Viking Line](#) operate ferry routes between Stockholm (Sweden) and Turku. The ferries are equipped with various amenities for passengers. They take between 8 and 11 hours to arrive in Turku (via Åland Islands.)

Getting to the harbour

Once you arrive to Turku, you can take a public bus to the port.

Bus route 1 operates from the airport, via city center and long-distance bus terminal to the ferry terminal, and it goes via the western edge of the TSR area.

More info about public transport can be found [here](#).



HOW TO GET BACK FROM MARIEHAMN, ALAND ISLANDS

By plane

You can fly from Mariehamn Airport (Mariehamns flygplats, airport code MHQ). There are flights to several cities in Finland, Sweden, and occasionally to other nearby countries.

You can search for flights from Mariehamn airport to your city using online flight search engines like [Skyscanner](#).

By Ferry

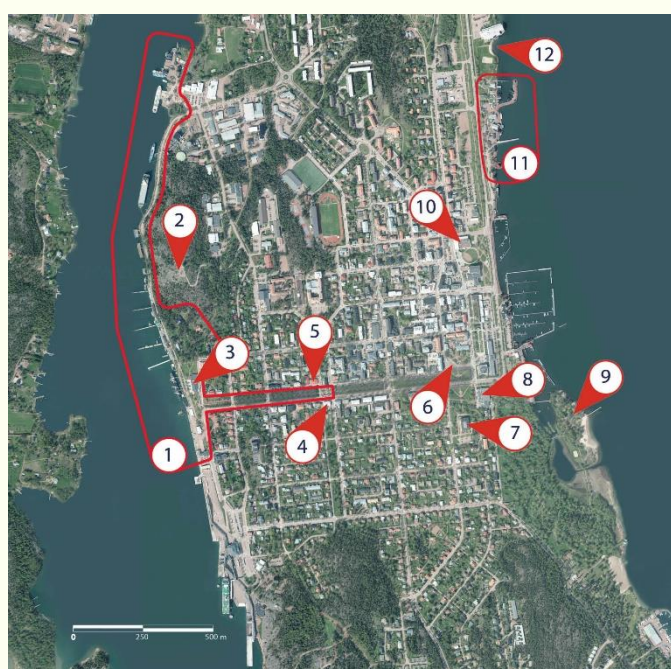
Mariehamn, being the capital of the Åland Islands, is well-connected by ferry services to various ports in Finland and Sweden. Here are some of the ferry operators that provide services to and from Mariehamn:

- [Viking Line](#): One of the major ferry operators in the Baltic Sea region, Viking Line offers ferry connections between Mariehamn and ports like Turku and Stockholm. They provide a range of amenities and entertainment options on their ferries.
- [Tallink Silja Line](#): operates ferries between Mariehamn and several destinations, including Helsinki and Stockholm. They offer various accommodation options, dining choices, and onboard activities.
- [Eckerö Line](#): connects Mariehamn with Helsinki. They provide a more economical option for travelers and offer amenities like restaurants and shopping opportunities onboard.

You can also check out the Visit Åland website for travel suggestions – [here](#).

The event area in Mariehamn

1. Main Event Area = The western harbour, where the Ships are moored.
2. Badhusberget – Viewing Point
3. Åland Maritime Museum (Auditorium for Captains briefing)
4. Media Centre
5. Crew Centre
6. Town Square (Crew Party)
7. Town Hall (Captains Dinner)
8. Åland Cultural History Museum & Åland Art Museum
9. Lilla Holmen – One of four sand beaches in Mariehamn
10. Public Library
11. Maritime Quarter
12. Mariebad swimming and wellness centre with beach & beach volley (Sports & Beach Party)
13. Korrvik – Parade of sails view point



RACE 3: MARIEHAMN, ALAND ISLANDS (FI) – SZCZECIN (PL) 26/07/2024 - 04/08/2024

HOW TO GET TO MARIEHAMN

To get to Mariehamn, the capital city of the Åland Islands, you have a few options depending on your starting location. The Åland Islands are an autonomous region of Finland, located on the Baltic Sea.

You can check out the Visit Åland website for travel suggestions – [here](#).

By plane

If you're coming from a distant location, you can fly to Mariehamn Airport (Mariehamns flygplats, airport code MHQ). There are flights from several cities in Finland, Sweden, and occasionally other nearby countries.

Check websites in your country that compare different airlines for flying with the best deal, like [Skyscanner](#).

By ferry

Ferries are a common way to reach the Åland Islands, especially if you're traveling from Sweden or Finland. Several ferry operators provide regular services to and from the islands. Here's how to do it:

From Sweden:

- Stockholm to Mariehamn: There are ferries operating between Stockholm (Sweden) and Mariehamn. These ferries are operated by companies like [Viking Line](#), [Tallink Silja Line](#), and [Eckerö Line](#).

From Finland:

- Turku to Mariehamn: Ferries run between Turku (Finland) and Mariehamn, operated by companies like [Viking Line](#) and [Tallink Silja Line](#),
- Helsinki to Mariehamn: You can also take a ferry from Helsinki (Finland) to Mariehamn, provided by companies like [Viking Line](#) and [Tallink Silja Line](#),

Ferry schedules can vary depending on the season and the operator, so it's recommended to check their websites for up-to-date information on schedules and ticket prices.

Getting to the harbour

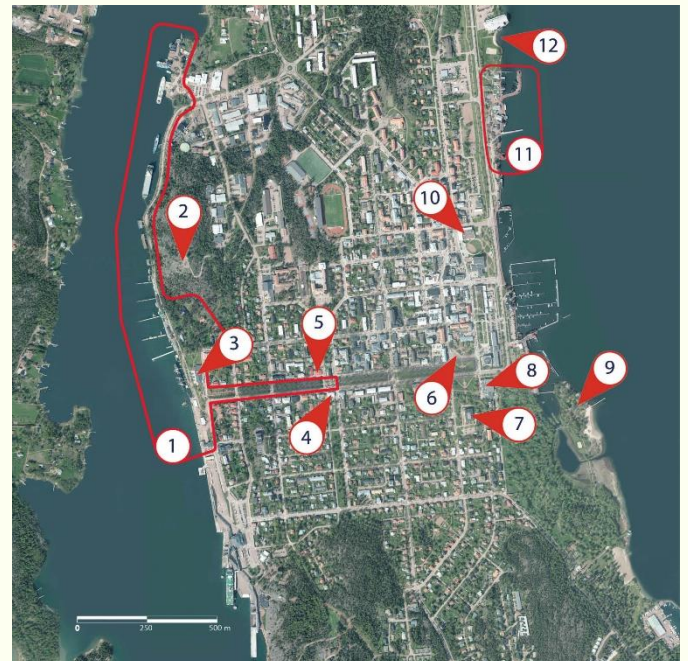
If you arrive to:

- the Western harbour, the Ships are only 300 meters to walk;
- another of Ålands ports, there are buses to Mariehamn.

You can use the local bus service to reach Mariehamn port. Buses in Mariehamn are operated by the company [Ålands lokaltrafik](#), and you can check their website or the information desk at the airport for the most up-to-date bus schedules and routes. The distance between Mariehamn Airport and the port is relatively short, so your journey should be quick and straightforward.

The event area in Mariehamn

1. Main Event Area = The western harbour, where the Ships are moored.
2. Badhusberget – Viewing Point
3. Åland Maritime Museum (Auditorium for Captains briefing)
4. Media Centre
5. Crew Centre
6. Town Square (Crew Party)
7. Town Hall (Captains Dinner)
8. Åland Cultural History Museum & Åland Art Museum
9. Lilla Holmen – One of four sand beaches in Mariehamn
10. Public Library
11. Maritime Quarter
12. Mariebad swimming and wellness centre with beach & beach volley (Sports & Beach Party)
13. Korrvik – Parade of sails view point



HOW TO GET BACK FROM SZCZECIN

By plane

The nearest airports to Szczecin are:

- 29 km: Szczecin-Goleniów "Solidarity" Airport (SZZ)
- 137 km: Berlin Brandenburg (BER)

While not directly in Szczecin, the Berlin Airport is relatively close and can be considered as an alternative option, with more international flights. There are direct [FlixBus](#) connections from Berlin Airport to Szczecin, which take around 2-2,5 hours to arrive.

Check websites in your country that compare different airlines for flying with the best deal, like [Skyscanner](#).

By train

Szczecin has good train connections with other major Polish cities, and some international destinations. The main train station in Szczecin is Szczecin Główny.

You can check the schedules and book tickets through the [Polish State Railways \(PKP Intercity\)](#) website or other train booking platforms.

By bus

There are national and international bus services from Szczecin to other cities. You can check bus schedules and book tickets through platforms like [FlixBus](#) or other bus operators.